

The T Line

VDI
Capto
Cylindrical
Shanks



High-performance live centres range T for tool-holder systems of the latest turning technology

Characteristics:

- ▶ **Spring-loaded centrepoint**, pressure indication by yellow, green, red coloured rings.
- ▶ **Design** for high radial and axial loads and for higher speeds.
- ▶ **High-precision bearings** in the head of the housing and the taper shank, the bearing seats of housing and centrepoint are matched to the bearings and ground to exact tolerances.
- ▶ **High running accuracy**, tested under axial load and guaranteed by test report.

- ▶ **Housing and centrepoint** (or centre spindle) are hardened.
- ▶ **Rotary shaft seal** protects the bearing from dirt and coolant.
- ▶ **Maintenance-free** through permanent lubrication.

Applications:

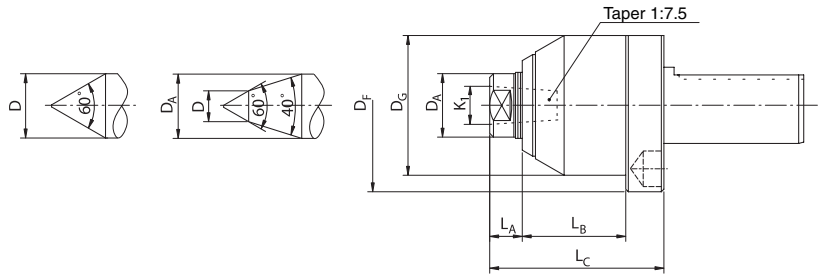
- ▶ Multi-spindle machines
- ▶ CNC-lathes without tailstock
- ▶ CNC-lathes with opposed spindle

High-performance live centres range T



VDI shank

- Type TRS** – Centrepoint 60°
- Type TRV** – Centrepoint 60°/40° extended
- Type TRE** – Centre spindle with internal taper for centering inserts

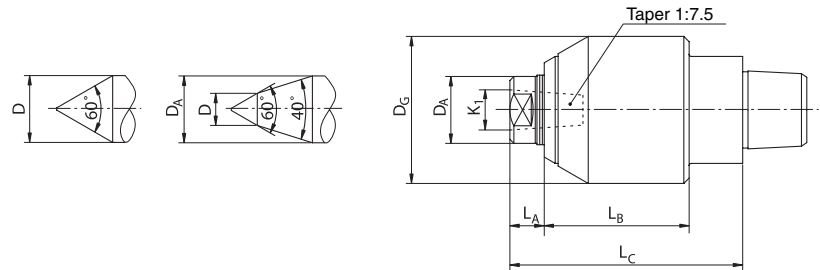


Eccentricity: max. 0.005 mm with test report
High-precision design max. 0.003 mm on request

Type	Shaft-size VDI	ID.No.	Max. daN ¹⁾	Max. axial force daN ²⁾	Spring travel (mm)	Max. r.p.m.	Dimensions (mm)							Size insert	
							D _A	D	D _F	K ₁	D _G	L _A	L _B		L _C
TRS	30	700S 055VDI30	420	760	2,7	5000	-	25	68	-	55	28	41	84	-
TRV	30	700V 055VDI30	320	760	2,7	5000	25	12	68	-	55	37	41	93,4	-
TRE	30	700E 055VDI30	-	760	2,7	5000	25	-	68	15,14	55	13	41	68,5	484
TRS	40	700S 068VDI40	800	1100	4,2	4000	-	35	83	-	68	40	53	108	-
TRV	40	700V 068VDI40	700	1100	4,2	4000	35	14	83	-	68	49	53	117	-
TRE	40	700E 068VDI40	-	1100	4,2	4000	35	-	83	22,14	68	21	53	90	487

Capto shank

- Type TRS** – Centrepoint 60°
- Type TRV** – Centrepoint 60°/40° extended
- Type TRE** – Centre spindle with internal taper for centering inserts

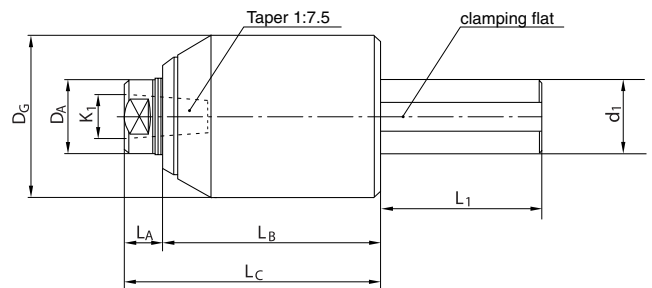


Eccentricity: max. 0.005 mm with test report
High-precision design max. 0.003 mm on request

Type	Shaft-size	ID.No.	Max. daN ¹⁾	Max. axial load daN ²⁾	Spring travel (mm)	Max. r.p.m.	Dimensions (mm)							Insert size
							D _A	D	K ₁	D _G	L _A	L _B	L _C	
TRS	C4	700S 055C04	420	760	2,7	5000	-	25	-	55	28	54	103	-
TRV	C4	700V 055C04	320	760	2,7	5000	25	12	-	55	37	54	112	-
TRE	C4	700E 055C04	-	760	2,7	5000	25	-	15,14	55	13	54	87	484
TRS	C5	700S 068C05	800	1100	4,2	4000	-	35	-	68	40	74	134	-
TRE	C5	700E 068C05	-	1100	4,2	4000	35	-	22,14	68	21	74	116	487
TRS	C6	700S 068C06	800	1100	4,2	4000	-	35	-	68	40	76	138	-
TRE	C6	700E 068C06	-	1100	4,2	4000	35	-	22,14	68	21	76	120	487

Cylindrical shaft

- Type TRE** – Centre spindle with internal taper for centering inserts
Centrepoint 60° on request



Eccentricity: max. 0.005 mm with test report
High-precision design max. 0.003 mm on request

Type	Shaft d ₁ (mm)	ID.No.	Max. daN ¹⁾	Max. axial load daN ²⁾	Spring travel (mm)	Max. r.p.m.	Dimensions (mm)							Insert size
							D _A	L ₁	K ₁	D _G	L _A	L _B	L _C	
TRE	25,4 (1")	700E 055ZyI25.4	-	760	2,7	5000	25	55	15,14	55	13	74	87	484
TRE	25	700E 055ZyI25	-	760	2,7	5000	25	55	15,14	55	13	74	87	484
TRE	32	700E 055ZyI32	-	760	2,7	5000	25	65	15,14	55	13	74	87	484
TRE	32	700E 068ZyI32	-	1100	4,2	4000	35	65	22,14	68	21	89	110	487
TRE	40	700E 068ZyI40	-	1100	4,2	4000	35	80	22,14	68	21	89	110	487

1) Max. workpiece weight (Typ TRS, TRV). Radial load of type TRE is limited by the centering inserts (table centering inserts).
2) Max. axial load at 100 r.p.m. and 2000 working hours of bearing service life.

Centering inserts

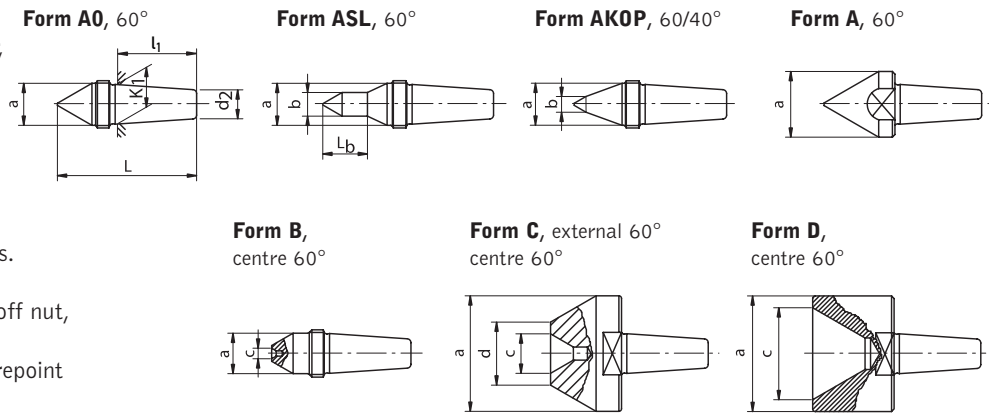


Centering inserts

For type TRE with internal taper, taper is ground to exact tolerances

Material:
high-quality tool steel, hardened

Varied application due to 7 forms.
Easy insert change for forms A0, ASL, AKOP and B by draw-off nut, for A, C and D by applying two spanners to the flats on the centrepoint and insert.



Centering insert ID.No.	Radial load max. daN ³⁾	Dimensions of centering inserts (mm)						Draw-off thread ⁴⁾	Taper dimensions (mm) 1:7.5		
		a	b	c	d	L	L _b		K ₁	d ₂	l ₁
484A0	220	15,7				53		M 18 x 1,5			
484ASL	100	15,7	9			65	17	M 18 x 1,5			
484AKOP	220	15,7	6			58		M 18 x 1,5			
484A	220	25				60		-	15,14	11	31
484B	110	15,7		4 x 2		53		M 18 x 1,5			
484C	190	44		15 x 5	24	60		-			
484D	190	44		35 x 12		60		-			
487A0	325	21,6				74		M 24 x 1,5			
487ASL	100	21,6	9			86	17	M 24 x 1,5			
487AKOP	325	21,6	8			80		M 24 x 1,5			
487A	325	32				82		-	22,14	16,44	43
487B	240	21,6		5 x 2,5		74		M 24 x 1,5			
487C	325	55		20 x 6	30	82		-			
487D	325	55		45 x 15		82		-			

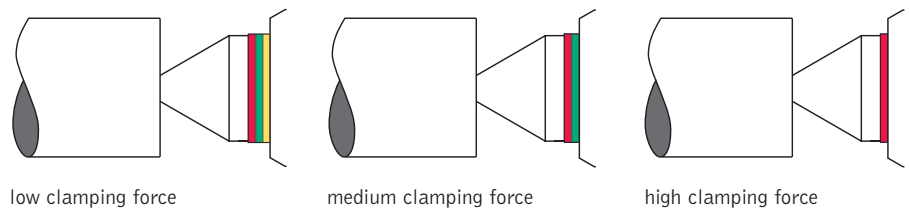
3) Radial load of type TRE is limited by the centering inserts.

4) Delivery incl. draw-off nut.

Indication by coloured rings

HousingØ D _G 55	HousingØ D _G 68
0-250 daN	0-450 daN
250-500 daN	450-800 daN
500-850 daN	800-1150 daN

Example of function



Special designs

with other shaft sizes and shaft dimensions, with shaft HSK, ABS and KM and with centrepoin in special dimensions on request.

> **Our product range**

- ▶ High-performance live centres
- ▶ High-performance bullnose live centres
- ▶ Tailstock sleeves
- ▶ Face drivers type SM
- ▶ Face drivers type HS
- ▶ Special designs



Karl Bruckner GmbH
Präzisionswerkzeugfabrik

P.O. Box 3146
D-71373 Weinstadt

Bruckwiesenstraße 13
D-71384 Weinstadt-Großheppach

Phone +49 (0) 7151 9671-0
Fax +49 (0) 7151 9671-23
E-Mail info@karlbruckner.de

www.karlbruckner.de