

High performance live centres

Type series LK

optimised against vibrations

Especially designed for

- high performance turning
- hard turning
- circular grinding



Characteristics

The design fulfils highest quality standards.

Two structural shapes are available:

- with strong bearing application for high radial and axial loads;
- with slim housing for MT 4 and MT 5 for small work pieces and light machining.

The bearing application is suitable for higher speeds.

The precise bearings are arranged in the head of the housing and taper end.

The bearing seats of housing and centrepoint are fitted to the bearing and ground exactly in narrow tolerances.

High truth of running. Each high performance live centre is tested under axial load and the measured truth of running is guaranteed by test report.

The housing is hardened. The centrepoint is made of wear resisting, alloyed tool steel, through-hardened.

The shaft seal protects the bearing from dirt and coolant .
Maintenance-free through permanent lubrication.

Special designs on request.

Type LKS, LKSG

centrepoint 60°

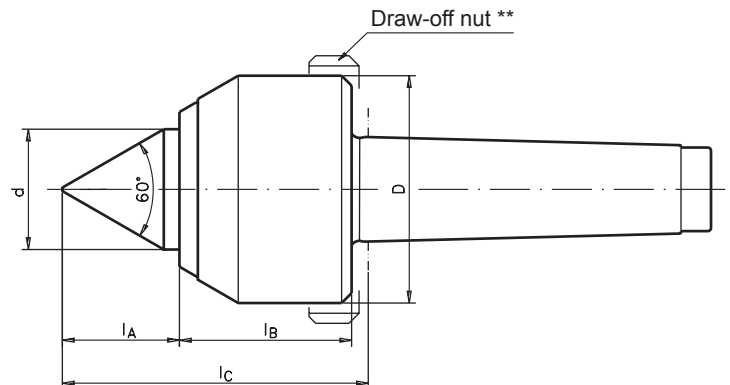
made of tool steel, fully hardened

Eccentricity:

Type LKS Standard design max. 0,005 mm

Type LKSG Precision design max. 0,003 mm

Truth of running is guaranteed by test report.



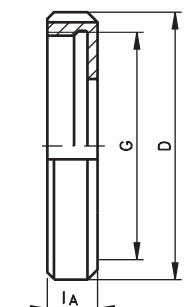
** The draw-off nut is not a part of the delivery extent.

Type LKS	ID. No.	750S 055003A	750S 055004A	750S 068004A	750S 068005A	750S 092005A	750S 127006A
Type LKSG	ID. No.	751S 055003A	751S 055004A	751S 068004A	751S 068005A	751S 092005A	751S 127006A
Morse taper		3	4	4	5	5	6
d mm		26	26	36	36	51	71
D mm		55	55	68	68	92	127
l _A mm		26	26	35	35	47,5	65
l _B mm		41	41	51,5	51,5	59,5	80
l _C mm		71	72	92	92	113	152
Workpiece weight max. daN *		720	720	1200	1200	2000	4800
Axial load max. daN *		760	760	1100	1100	2000	3500
Max. r.p.m.		7000	7000	6000	6000	5000	3000
Draw-off nut		M55L	M55L	M68L	M68L-5	M92L	M127L

* Max. workpiece weight and max. axial load at 100 rpm. and 2000 operating hours bearing life.

Draw-off nut

ID. No.	G	l _A	D
	mm	mm	mm
M55L	M55 x 1,5	10	68
M68L _{MK4} , M68L-5 _{MKS}	M68 x 1,5	15	80
M92L	M92 x 1,5	18	110
M127L	M127 x 1,5	18	145



Type LKH, LKHG

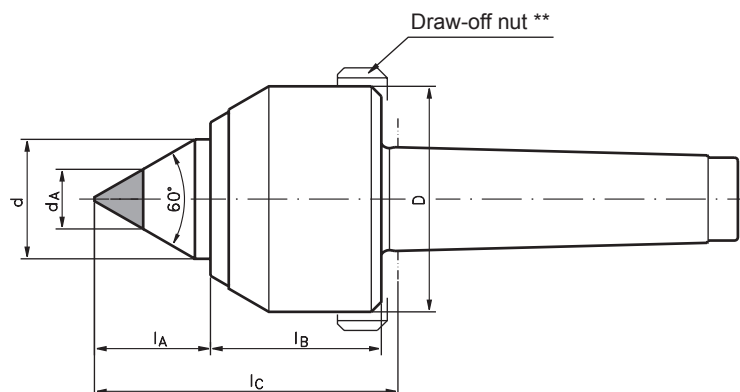
centrepoint 60° with carbide insert

Eccentricity:

Type LKH Standard design max. 0,005 mm

Type LKHG Precision design max. 0,003 mm

Truth of running is guaranteed by test report.



** The draw-off nut is not a part of the delivery extent.

Type LKH	ID. No.	750H 055003A	750H 055004A	750H 068004A	750H 068005A	750H 092005A
Type LKHG	ID. No.	751H 055003A	751H 055004A	751H 068004A	751H 068005A	751H 092005A
Morse taper		3	4	4	5	5
d	mm	26	26	36	36	51
d _A	mm	14	14	18	18	18
D	mm	55	55	68	68	92
l _A	mm	26	26	35	35	47,5
l _B	mm	41	41	51,5	51,5	59,5
l _C	mm	71	72	92	92	113
Workpiece weight max. daN *		240	240	500	500	500
Axial load max. daN *		760	760	1100	1100	2000
Max. r.p.m.		7000	7000	6000	6000	5000
Draw-off nut		M55L	M55L	M68L	M68L-5	M92L

* Max. workpiece weight and max. axial load at 100 rpm. and 2000 operating hours bearing life.

Type LKV, LKVG

centrepoint extended, 60/40°

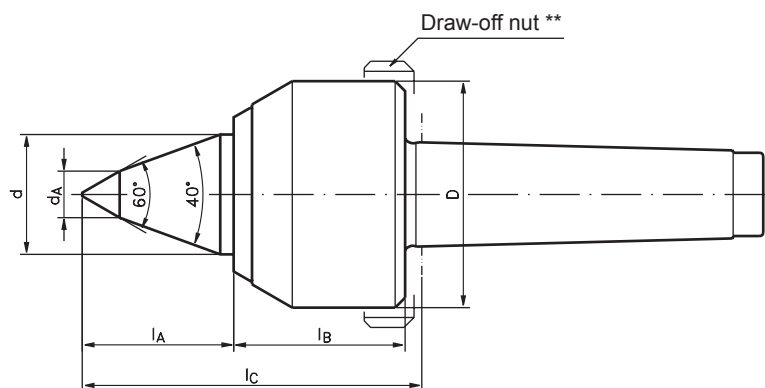
made of tool steel, fully hardened

Eccentricity:

Type LKV Standard design max. 0,005 mm

Type LKVG Precision design max. 0,003 mm

Truth of running is guaranteed by test report.



** The draw-off nut is not a part of the delivery extent.

Type LKV	ID. No.	750V 055003A	750V 055004A	750V 068004A	750V 068005A	750V 092005A
Type LKVG	ID. No.	751V 055003A	751V 055004A	751V 068004A	751V 068005A	751V 092005A
Morsekegel		3	4	4	5	5
d	mm	26	26	36	36	51
d _A	mm	12	12	14	14	17
D	mm	55	55	68	68	92
l _A	mm	33	33	45,5	45,5	63
l _B	mm	41	41	51,5	51,5	59,5
l _C	mm	78	79	102	103	128
Workpiece weight max. daN *		550	550	900	900	1400
Axial load max. daN *		760	760	1100	1100	2000
Max. r.p.m.		7000	7000	6000	6000	5000
Draw-off nut		M55L	M55L	M68L	M68L-5	M92L

* Max. workpiece weight and max. axial load at 100 rpm. and 2000 operating hours bearing life.